



CRF-X 250/450 Install Guide



CRF 250X

Do not zip tie anything until you are done!!!

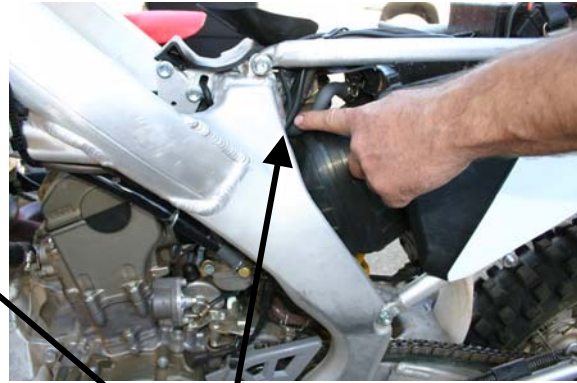
Step 1: Remove the Headlight, seat and gas tank from CRF-X 250

Step 2: Partially install the headlight assembly using the top right band only to hold it in place temporarily. You will need to plug wires to this assembly.

Step 3: Install handlebar switch on clutch side. You will need to move clutch perch to the right (about ½ inch to 1 inch) to make room for the switch. The switch plugs into the circuit board on the bottom of the headlight using the 8-pin plug (the only unused 8-pin one on the circuit board)

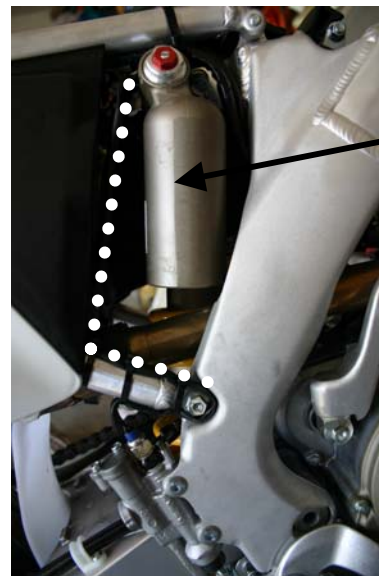
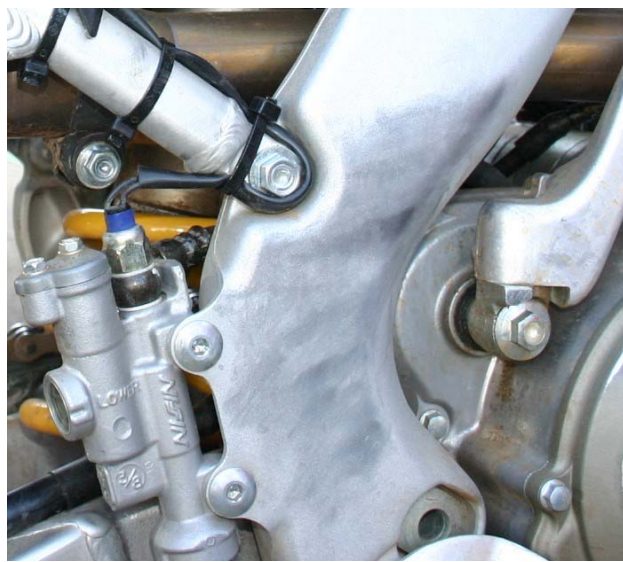
Step 4: (Power harness) The power wire with the two pin plug runs from the battery to the 6 inch wire hanging from the control board. The red wire should be attached to the positive and the black wire to the negative of battery. Run the wire down the left side of the bike.





Route wire along frame

Step 5: (Taillight harness) The wire with the six-pin plug is for the taillight. Run the wire down the left side of the bike.



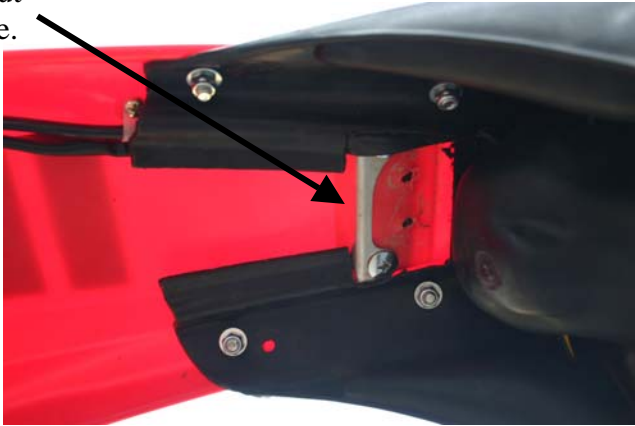
Route wire

Step 6: (Hydraulic Brake Switch) To install the hydraulic brake switch you need to first remove the banjo bolt and then screw the new switch into the master cylinder. You need to make sure that you have the NEW crush washers above and below the brake line. Do this as fast as you can so you don't lose any brake fluid. You might need to bleed the rear brake if the switch does not work or your brakes feel soft. If you are not familiar with bleeding brakes, take it to a shop that can do it correctly.

Step 7: Route the wire from the brake switch up the frame and connect it to the green wires on the taillight harness. Use shrink-wrap to protect connectors.

Step 8: (Rear Taillight) Clamp UFO rear taillight under the rear fender. Slide the taillight forward so that the rear fender extends about 1 inch past the red taillight; this protects the taillight from trees. Use ¼ inch drill and the bolts supplied. You may have to drill a 5/8-inch hole in the rear fender for the plug to fit through. Plug the UFO taillight plug into the rear taillight harness. On the CRF-X you will need to cut a square out of the UFP tail light section in order to fit snug around the LED taillight.

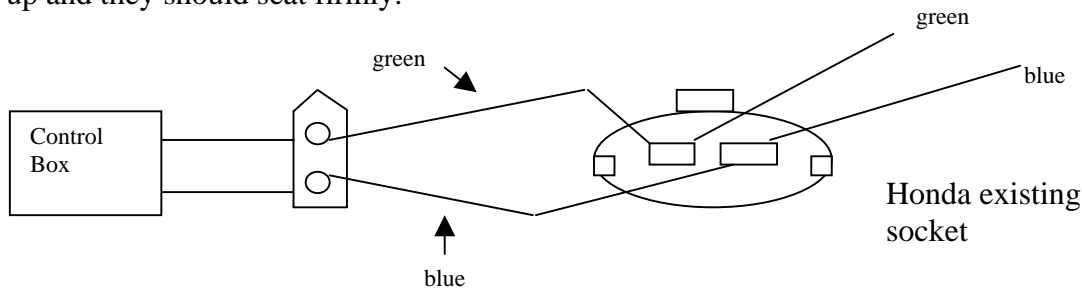
Cut out square.



5/8in hole



Step 9: Plug the green and blue wire from the control box into the existing green and blue sockets on Honda headlight socket. The peach connectors may be hard to push on, but line them up and they should seat firmly.



Step 10: (Final connections) Fasten the remaining rubber straps to mount the headlight to the bike. With the handlebars turned all the way to the right allow some extra wire and zip tie both the power line and the rear taillight harness to the bike.

Step 11: (Testing Kit) Move the rocker switch on the kit to the left. A five-watt daytime running headlight and your taillight should be on. In this setting you should also have use of your horn, blinkers, and brake light. The color of the left LED also lets you know how the charging system of your motorcycle is functioning. A red light indicates less than 12 volts; a yellow indicates 12-13 volts, while a green indicates around 14 volts. Next rotate the rocker switch to the right. This adds the main headlight to the circuit. You can now use the high-low beam on the handlebar switch accordingly. In this mode you can also use your turn signals, horn and brake light.

Step 12: Zip tie all wires and install gas tank and seat at this time.

TRICK DUAL SPORT

LAYOUT & WIRE CODE 03/04

Fuses Resettable

- F1 power in 9 amp
- F2 aux power 3 amp
- F3 running light 3 amp
- F4 brake light 3 amp
- F5 horn 3 amp
- F6 signal flasher 3 amp
- F7 head light 5 amp

- WIRE COLOUR HANDLE BAR SWITCH
- PINK 1 HORN TO SWITCH
 - BLACK 2 GROUND
 - LIGHT GREEN 3 LOW BEAM OUT
 - YELLOW 4 HIGH BEAM OUT
 - BLUE 5 LEFT SIGNAL OUT
 - DARK GREEN 6 RIGHT SIGNAL OUT
 - BROWN WHITE 7 SIGNAL SWITCH OUT
 - BROWN 8 HEAD LIGHT POWER

- FRONT LIGHT UNIT
- BLACK 1 GROUND
 - RED 2 HORN TO SWITCH
 - ORANGE 3 HIGH BEAM OUT
 - YELLOW 4 LOW BEAM OUT
 - GREEN 5 HEAD LIGHT RUNNING
 - BLUE 6 HORN POWER OUT
 - VIOLET 7 RIGHT SIGNAL OUT
 - GREY 8 LEFT SIGNAL OUT

- REAR LIGHT UNIT
- BLACK 1 GROUND
 - RED 2 FRONT BRAKE SWITCH
 - ORANGE 3 RIGHT SIGNAL OUT
 - YELLOW 4 TAIL LIGHT RUNNING
 - GREEN 5 REAR BRAKE SWITCH
 - BLUE 6 LEFT SIGNAL

